

YEAR 2018

COVERAGE (B) STATION 4203

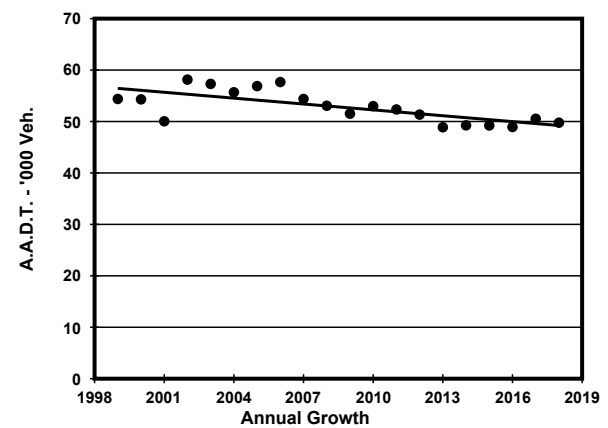
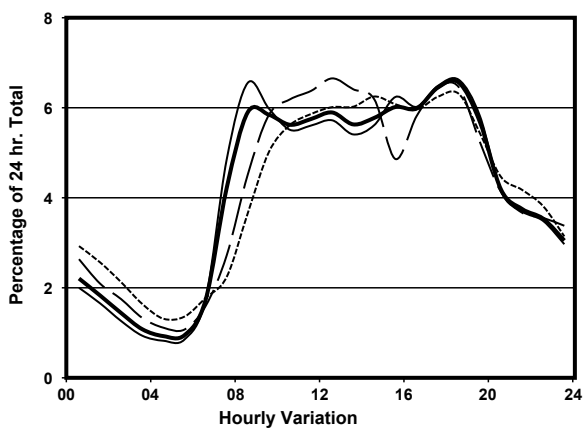
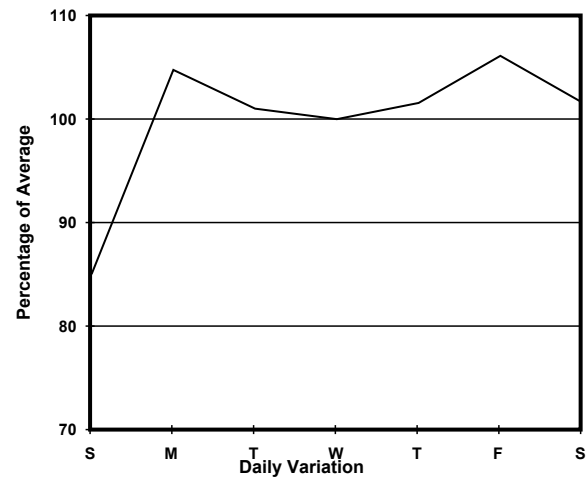
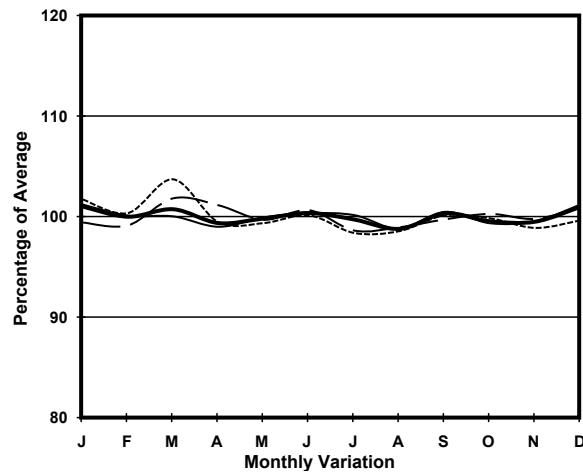
ROAD NETWORK MAJOR

ROAD TYPE PRIMARY DISTRIBUTOR

LINK PRINCE EDWARD RD W (from EMBANKMENT RD to YUEN NGAI ST)



1. TRAFFIC FLOW VARIATION AND GROWTH



— All day — Mon.- Fri. Sat. - - - - Sun.

2. TRAFFIC CHARACTERISTICS (BY DIRECTION)

Parameter	All - Day	Mon. - Fri.	Sat.	Sun.
EAST BOUND				
A.A.D.T.	1760	1740	1940	1770
R 12 / 24 - %	80	79.8	81.3	80.5
R 16 / 24 - %	92.5	92.5	93.1	92.4
AM Peak Hour	0800-0900	0800-0900	0900-1000	0900-1000
One-way flow at AM peak hour	110	110	130	120
T - % (AM)	-	6.8	-	-
PM Peak Hour	1600-1700	1600-1700	1700-1800	1600-1700
One-way flow at PM peak hour	120	120	140	130
T - % (PM)	-	-	-	-
Prop.of commercial vehicles - 16 hr.	-	1.5	-	-
WEST BOUND				
A.A.D.T.	48010	49770	49070	40910
R 12 / 24 - %	69.3	70.3	67.9	64.6
R 16 / 24 - %	86.6	87.6	84.7	82.8
AM Peak Hour	0800-0900	0800-0900	0900-1000	0900-1000
One-way flow at AM peak hour	2830	3260	2850	2020
T - % (AM)	-	7	-	-
PM Peak Hour	1800-1900	1800-1900	1800-1900	1800-1900
One-way flow at PM peak hour	3150	3300	3180	2580
T - % (PM)	-	5.1	-	-
Prop.of commercial vehicles - 16 hr.	-	5.7	-	-

3. OTHER INFORMATION AND COMMENT

4. Vehicle classification and occupancy - Monday to Friday

Time		Class of vehicle									
		Motor Cycle	Private Car	Taxi	Private LB	PLB	Goods veh.		Non Fr. Bus	Fr. Bus	
							Light	M & H		SD	DD
0700-0800	Pro	2.5	25.4	24.5	2.5	10.1	22.2	2.5	5.7	0.2	4.2
	Ocp	1.1	1.5	2.0	5.9	12.1	1.3	1.1	5.0	22.3	55.6
0800-0900	Pro	3.1	46.9	20.7	0.7	7.1	14.5	2.7	1.8	0.1	2.5
	Ocp	1.1	1.4	2.0	5.7	15.5	1.4	1.5	16.8	22.8	49.7
0900-1000	Pro	1.7	44.1	18.4	1.2	7.7	20.9	2.3	1.4	0.1	2.2
	Ocp	1.1	1.4	2.1	4.1	14.9	1.4	1.4	4.2	18.0	42.5
1000-1100	Pro	1.6	37.6	24.2	0.7	6.3	25.0	1.5	0.8	0.1	2.2
	Ocp	1.1	1.5	2.0	2.8	11.9	1.4	1.5	5.2	11.5	37.7
1100-1200	Pro	1.6	41.5	22.6	1.5	5.8	20.8	2.4	1.6	0.1	2.0
	Ocp	1.0	1.4	2.2	1.9	13.2	1.4	1.3	10.1	11.5	38.8
1200-1300	Pro	1.7	39.1	23.2	1.5	4.7	22.9	2.4	2.2	0.1	2.2
	Ocp	1.0	1.3	2.1	5.5	11.2	1.5	1.4	14.3	9.5	36.0
1300-1400	Pro	1.5	40.8	22.1	1.8	5.4	21.8	2.2	2.1	0.1	2.2
	Ocp	1.0	1.5	1.8	3.4	11.4	1.3	1.3	13.2	14.3	34.3
1400-1500	Pro	2.4	41.7	22.1	1.1	4.7	23.5	1.4	0.7	0.1	2.3
	Ocp	1.1	1.5	1.9	3.3	12.4	1.4	1.2	4.0	5.0	30.3
1500-1600	Pro	2.0	40.8	23.2	4.2	5.5	17.8	2.8	1.6	0.1	2.0
	Ocp	1.2	1.6	1.9	9.5	12.0	1.5	1.3	27.2	45.0	33.3
1600-1700	Pro	2.4	48.2	17.8	0.9	4.6	21.3	1.3	1.3	0.1	2.1
	Ocp	1.1	1.5	2.0	4.9	12.4	1.5	1.2	10.5	22.3	33.1
1700-1800	Pro	3.9	48.9	20.5	1.1	5.7	14.6	1.6	1.4	0.1	2.2
	Ocp	1.1	1.5	1.9	4.8	14.9	1.6	1.1	6.8	23.3	40.3
1800-1900 Peak hour	Pro	4.8	52.0	20.3	0.4	8.2	9.6	1.5	1.3	0.1	2.0
	Ocp	1.1	1.5	1.9	2.3	15.7	1.6	1.5	10.1	17.3	47.5
1900-2000	Pro	2.3	53.0	27.4	0.1	9.3	4.1	0.3	1.3	0.1	2.1
	Ocp	1.1	1.4	1.6	1.0	10.0	1.4	1.5	8.3	5.3	26.6
2000-2100	Pro	2.0	43.2	33.0	0.4	10.9	7.0	0.4	0.4	0.1	2.6
	Ocp	1.3	1.6	1.9	3.0	8.3	1.5	1.5	1.0	4.0	12.9
2100-2200	Pro	2.6	43.6	35.7	0.0	9.2	5.6	0.0	0.2	0.2	2.9
	Ocp	1.1	1.5	1.7	0.0	5.0	1.6	0.0	1.0	6.3	10.3
2200-2300	Pro	1.6	46.2	32.9	0.0	11.1	3.6	1.3	0.4	0.2	2.8
	Ocp	1.4	1.6	1.6	0.0	5.9	1.4	1.3	30.0	3.3	13.0
16 hours	Pro	2.4	43.9	23.5	1.2	7.0	16.4	1.7	1.5	0.1	2.3
	Ocp	1.1	1.5	1.9	5.5	11.8	1.4	1.3	10.9	14.3	35.2

Legend

Pro. Proportion of vehicles in % (Sum may not add up to 100% due to figure rounding)*

Ocp. Average occupancy of vehicles including both driver and passengers*

M&H Medium and Heavy

***** All traffic data are collected from combined bounds except for one way traffic